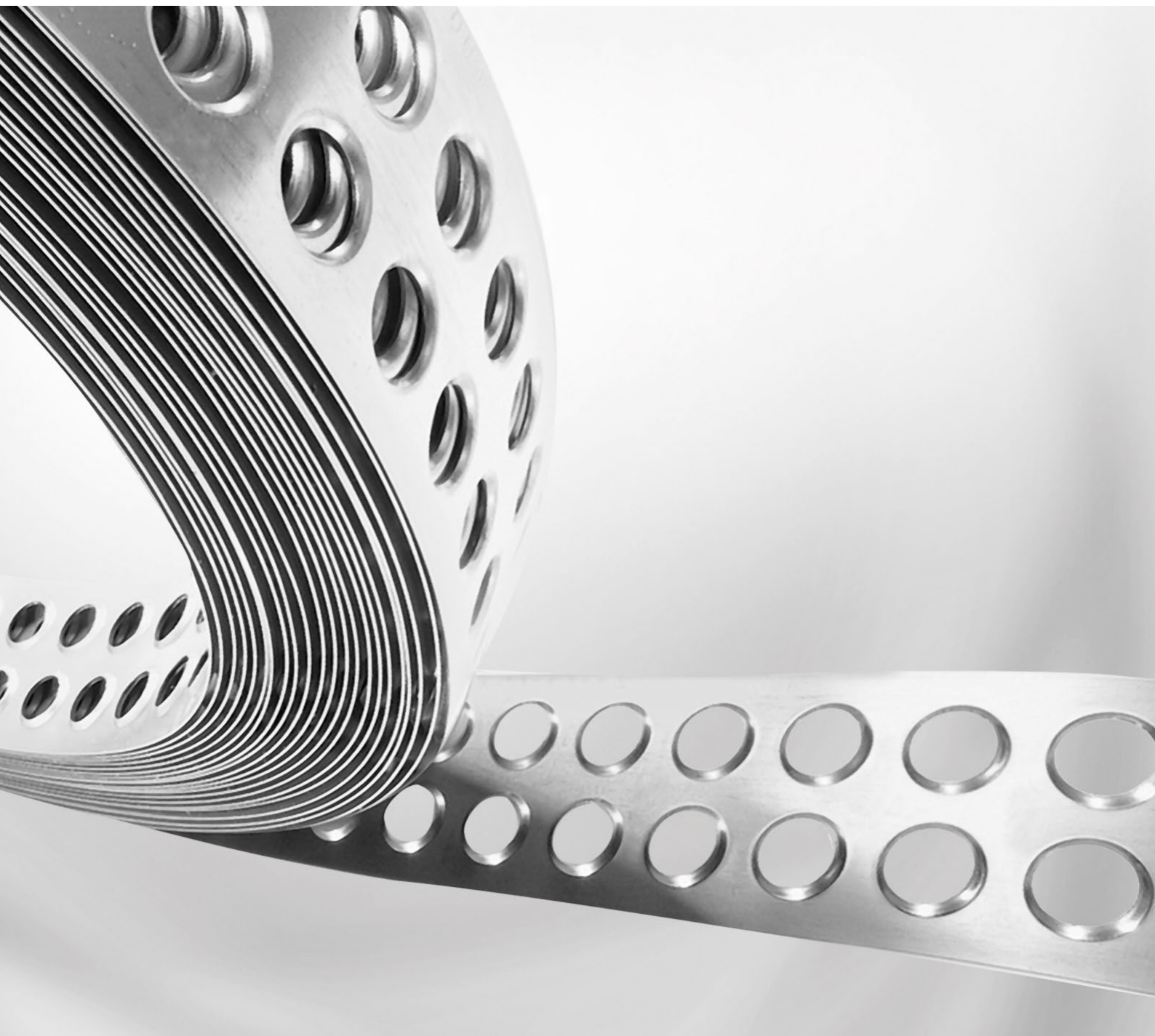


**Leviat**<sup>®</sup>  
A CRH COMPANY



PRODUCT INFORMATION

**MOSO**<sup>®</sup> Lochband  
Masonry reinforcement





# **We are one team.** **We are Leviat.**

Leviat is the new name of CRH's construction accessories companies worldwide.

Under the Leviat brand, we are uniting the expertise, skills and resources of MODERSOHN and its sister companies to create a world leader in fixing, connecting and anchoring technology.

The products you know and trust, including the MOSO® Lochband perforated strip, will remain an integral part of Leviat's comprehensive brand and product portfolio. As Leviat, we can offer you an extended range of specialist products and services, greater technical expertise, a larger and more agile supply chain and better, faster innovation.

By bringing together CRH's construction accessories family as one global organisation, we are better equipped to meet the needs of our customers, and the demands of construction projects, of any scale, anywhere in the world.

**This is an exciting change. Join us on our journey.**

**Read more about Leviat at [Leviat.com](https://www.leviat.com)**



Our product brands include:

**Ancon**

**HALFEN**

**MODERSOHN®**  
Stainless Steel

**PLAKA**



**60**

locations

sales in  
**30+**  
countries

**3000**

people worldwide

Imagine. Model. Make.

[Leviat.com](http://Leviat.com)

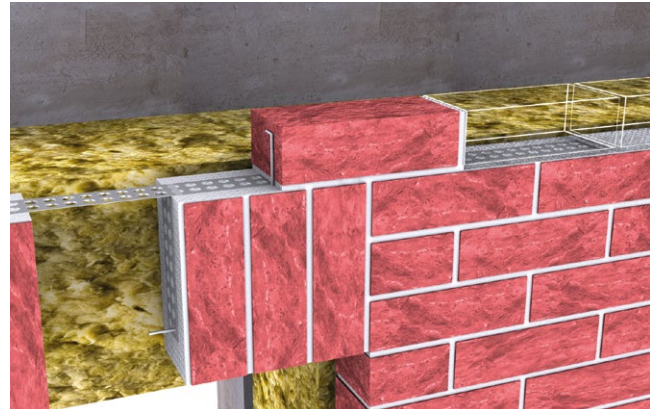
# MOSO® Lochband

## Masonry reinforcement

The MOSO® Lochband was originally developed as brick reinforcement for lintels over door and window openings.

It can be used to reinforce soldier course bonds, as well as stretcher courses.

Another key application is crack protection, to secure facades permanently against cracking, minimizing warranty claims, and in general making bricklaying as easy as possible.



■ MOSO® Lochband as brick reinforcement for lintels

### Use and application

- Brick reinforcement for lintels
- Wall connection between masonry panels
- Crack protection at window and door openings, walls with vertical point loads, and structural elements of different heights connected to each other.

### Easy to use



■ Convenient on-site transport



■ Easy to pull out of the box



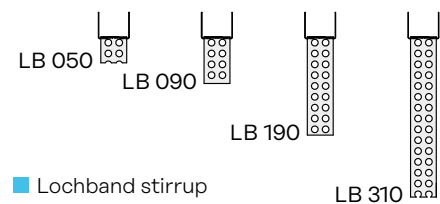
■ Simple to cut with hand tools



■ All accessories are packed in a user-friendly way

Lochband length	Reinforcement for lintels		Crack protection		
	E 420 (high-tensile stainless steel)	E 235 (stainless steel)	Galvanized steel	Thin mortar joint stainless steel	Thin mortar joint galvanized steel
	Item no.	Item no.	Item no.	Item no.	Item no.
50 m (box)	1000210094	1000210097	1000210099	1000210101	1000210103
25 m (box)	1000210093	1000210096	1000210098	1000210100	_____
10 m (box)	_____	1000210095	_____	_____	_____

Lochband stirrup	Packaging unit	Item no.
LB 050	100 pieces	1000210104
LB 090	100 pieces	1000210105
LB 190	100 pieces	1000210106
LB 310	50 pieces	1000210107

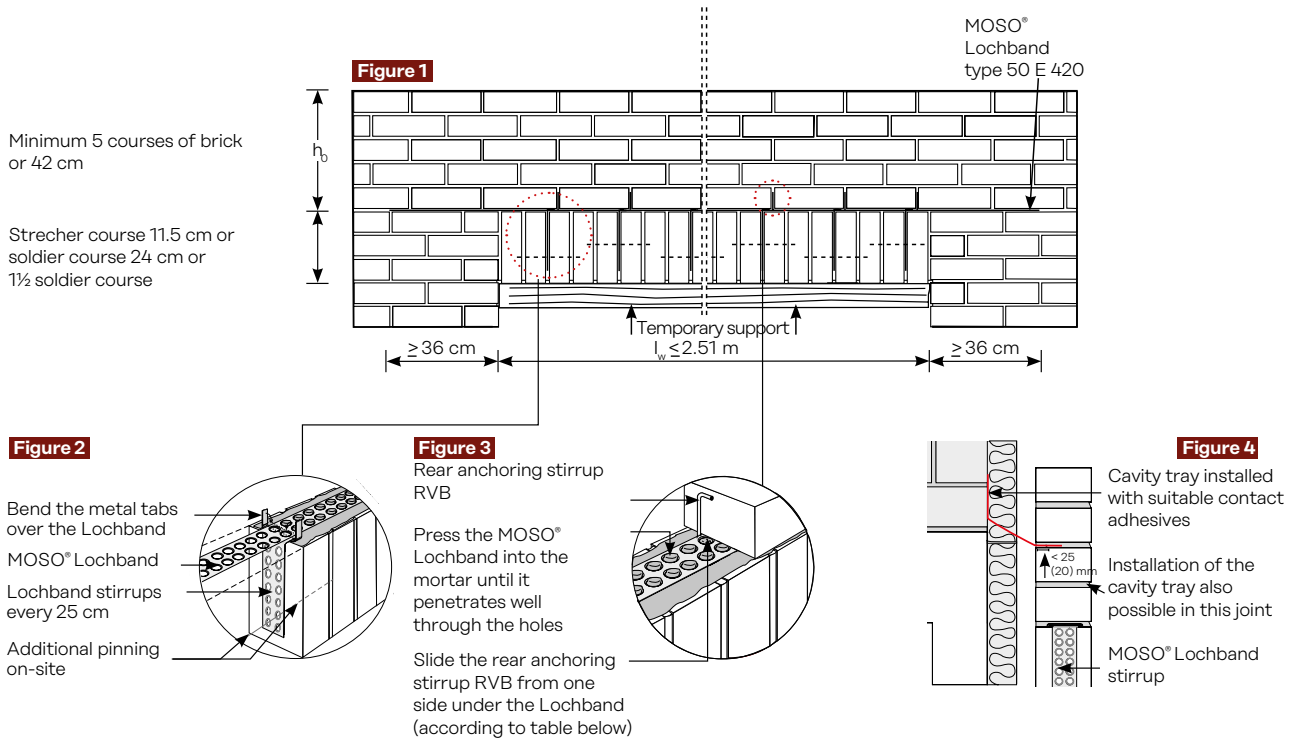


■ Lochband stirrup

LB 310

Accessories (refer to assembly instructions for further information)	Packaging unit	Item no.
Rear anchoring stirrup for load transmission to the pressure zone	100 pieces	1000210108
Round bar 4 x 250 mm for pinning soldier course bonds	100 pieces	1000210109

# MOSO® Lochband as brick reinforcement for lintels



■ Install the Lochband stirrups...



■ ... between bricks for the soldier course lintel



■ ... then place a longitudinal piece of the MOSO® Lochband, press it into the mortar and finally bend the steel tabs over the Lochband. Finished!

## Installing MOSO® Lochband

- Unroll the MOSO® Lochband out of the box and cut it with hand tools e.g. tin snips  
Cutting length = clear width of the lintel + 2 x 36 cm
- Built the soldier course lintel with full joints and install the Lochband stirrups with at centers of  $\leq 25$  cm
- Apply the mortar for the stretcher course above
- Place the MOSO® Lochband and press it into the mortar
- Bend the metal tabs of the MOSO® Lochband stirrups over the longitudinal Lochband
- Continue with the stretcher course and, for lintels  $l_w \geq 1.51$  m, insert the MOSO® rear anchoring stirrup RVB with one leg under the Lochband at centers of  $\leq 25$  cm into the mortar joints.  
The lintel must be supported until the mortar has fully cured
- Please note: The brickwork height above the longitudinal
- MOSO® Lochband must be at least 5 courses ( $\geq 42$  cm).

## Material requirements per lintel ①

Lintel length [m]	1.01	1.26	1.51	1.76	2.01	2.26	2.51
Length of longitudinal MOSO® Lochband [m]	1.75	2.00	2.25	2.50	2.75	3.00	3.25
Number of Lochband stirrups (LB...)	4	5	6	7	8	9	10
Number of rear anchoring stirrups (RVB)	—	—	6	7	8	9	10

① Minimum number of stirrups shown - it may be worth allowing for extra stirrups to avoid inconveniences on-site

# MOSO® Lochband as lintel reinforcement for large openings

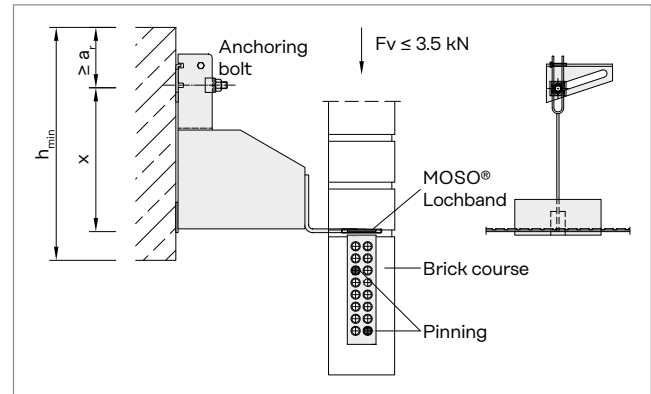
## Lintel length $l_w > 2.51 \text{ m} \leq 5.01 \text{ m}$

The combination of

- MOSO® Lochband type 50 E 420 and
- MOSO® masonry support brackets type EK-W makes lintels over 2.51 m possible

## Product information

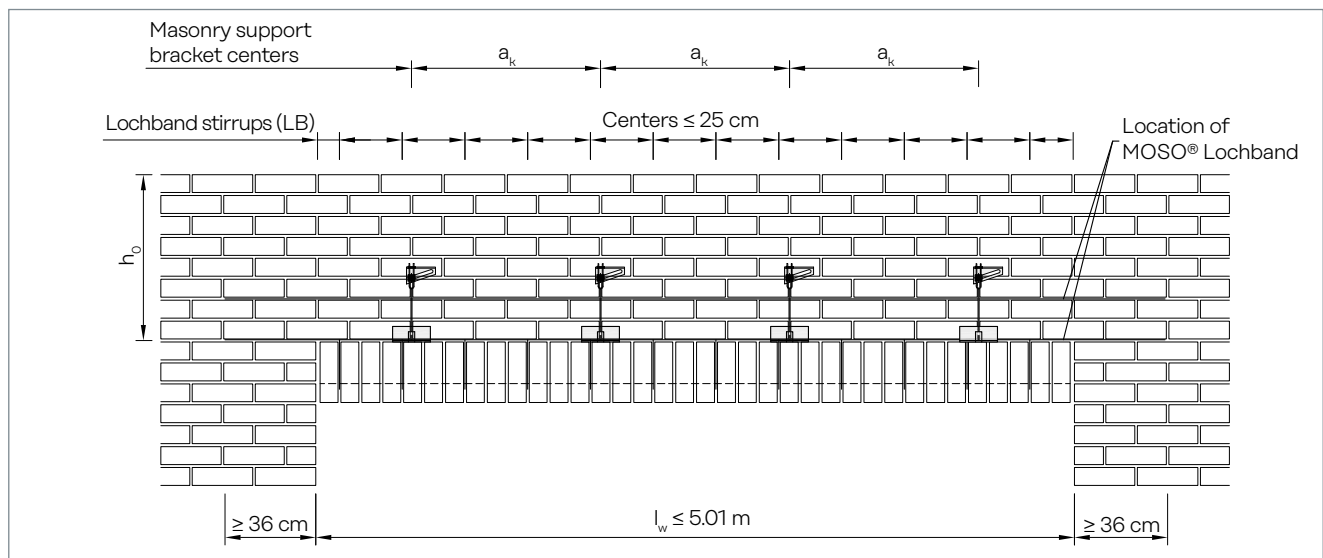
- Convenient roll of brick reinforcement
- In stainless steel for corrosion prone areas
- Without material-intensive impacts



■ Section and frontal view of the masonry support brackets EK-W in combination with the MOSO® Lochband

## Use and application

- The installation of masonry support brackets allows the MOSO® Lochband to be used for clear spans of  $> 2.51 \text{ m}$ .
- The masonry support brackets are fixed to the concrete using appropriate and approved anchoring bolts
- Other types of masonry support brackets are possible. Please contact us for further assistance.
- The spacing between the masonry support brackets must be planned according to the height and measurements of the brickwork.
- A second layer of MOSO® Lochband should be installed in the second mortar joint above the first course of bricks
- The Lochband stirrups LB ensure a secure bond of the soldier course, and should be installed at intervals of  $\leq 25 \text{ cm}$
- Further information is provided in the installation instructions
- Round bars  $4 \times 250 \text{ mm}$  can be supplied for additional pinning of the soldier course



■ Arrangement of the Lochband layers and masonry support brackets

## Material requirements per lintel ①

Width of opening $l_w$ [m]	2.76	3.01	3.26	3.51	3.76	4.01	4.26	4.51	4.76	5.01
Height of brickwork $h$ [m]	0.42 - 1.60									
Masonry support bracket centers $a_k$ [m]	$\leq 0.75$									
No. of masonry support brackets EK-W 3.5	3	4	4	4	5	5	5	6	6	6
Length of Lochband [m] (2x)	3.50	3.75	4.00	4.25	4.50	4.75	5.00	5.25	5.50	5.75
Number of Lochband stirrups LB (...)	11	12	13	14	15	16	17	18	19	20

① Minimum number of stirrups shown - it may be worth allowing for extra stirrups to avoid inconveniences on-site

Please note: The brickwork height above the longitudinal MOSO® Lochband must be at least 5 courses ( $\geq 42 \text{ cm}$ ).

# MOSO® Lochband as masonry reinforcement

With the MOSO® Lochband type 50 E 235 made of stainless steel or type 50 made of galvanized steel.

## Use and application

Cracking in masonry cannot be entirely avoided. Although cracks do not generally affect stability, they can represent a functional defect and are aesthetically unappealing.

Crack formation can be reduced by installing the 5 cm wide MOSO® Lochband into the brickwork. The use of masonry reinforcement as crack protection is not subject to any regulation by the construction authorities or any European standard.

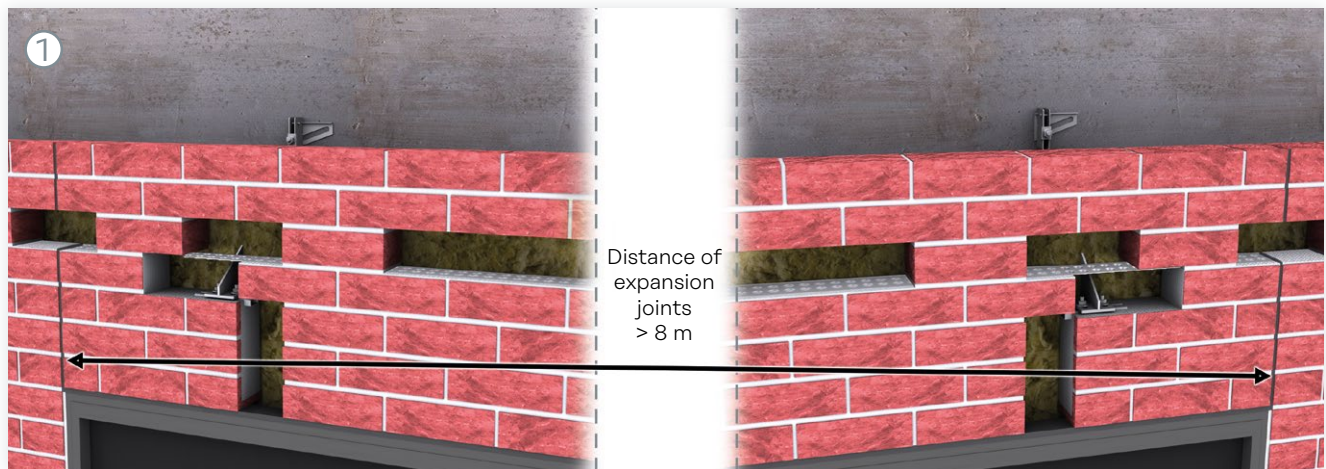
Below you will find examples of the use of Lochband.

We recommend the use of the MOSO® Lochband type 50 E 235 made of **stainless steel** for masonry facades, as well as other corrosion prone areas.

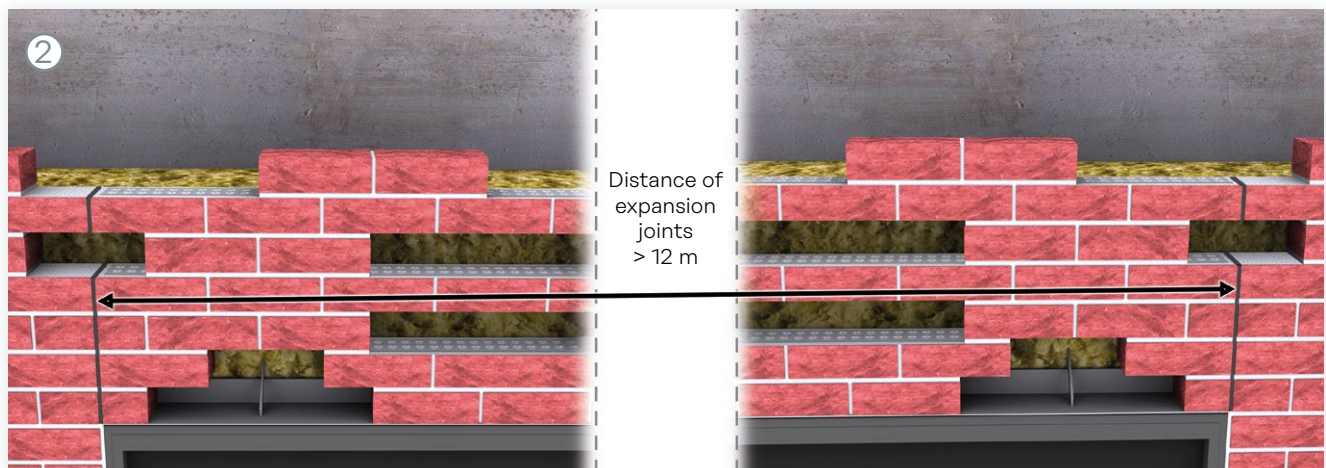


■ Applications for the MOSO® Lochband as masonry reinforcement

## Application examples

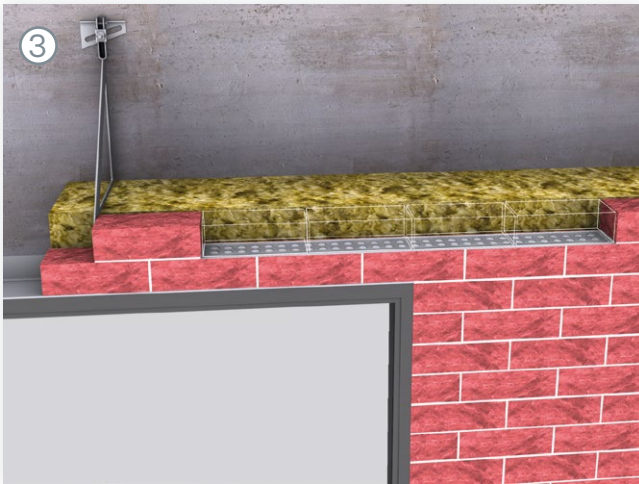


■ Recommendation for precast lintels over 8 m long: one layer of Lochband in the 2nd mortar joint.

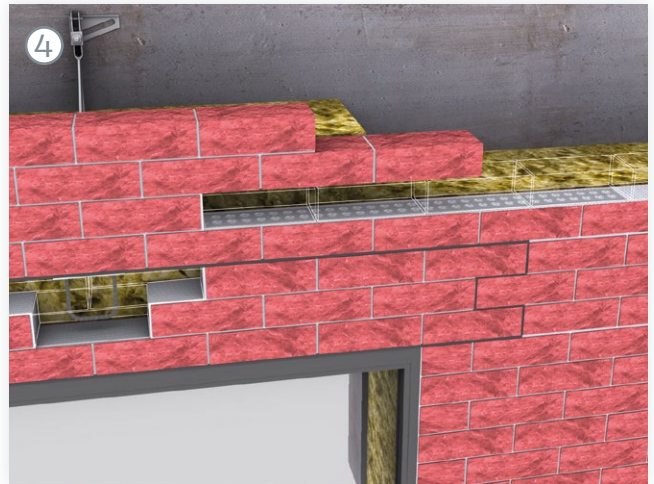


■ Potential to increase the distance between expansion joints (up to 12 m), through the installation of multiple layers of Lochband

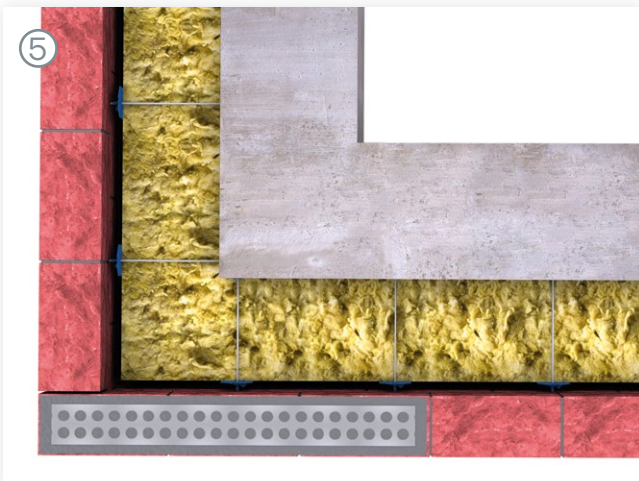
# MOSO® Lochband as Masonry reinforcement



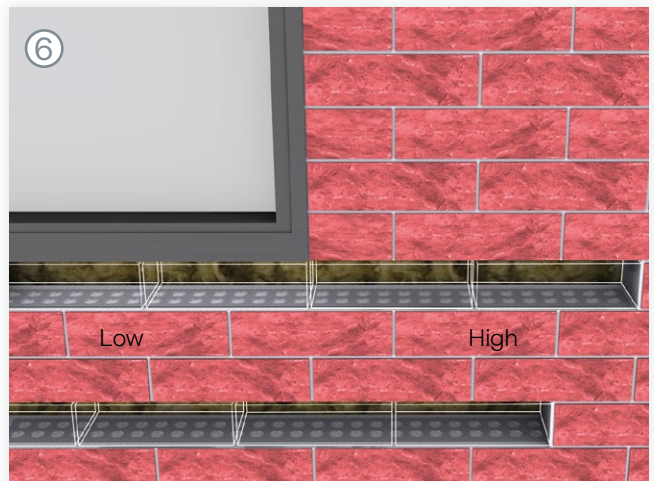
■ Angle masonry support with one bracket



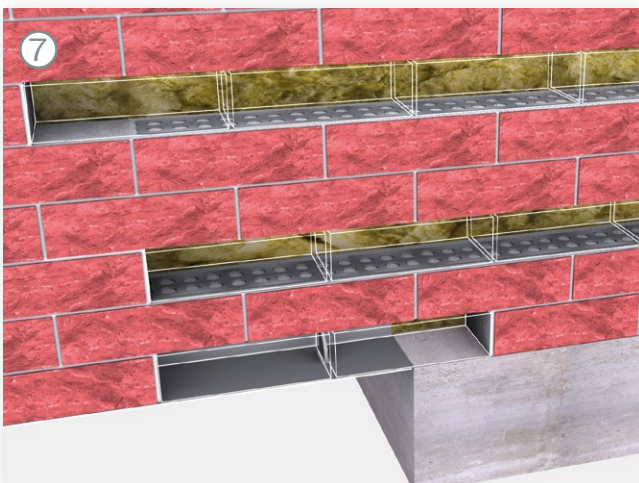
■ Precast lintel fixed on one side



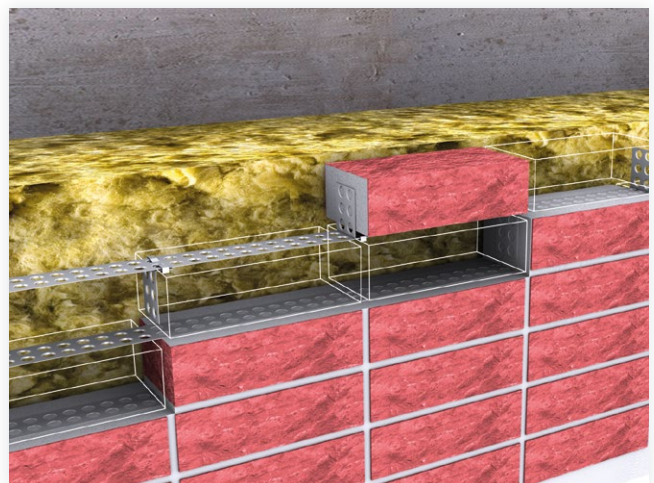
■ Corners in facades with large cavities



■ Different heights of brickwork



■ Different foundations / fixing points

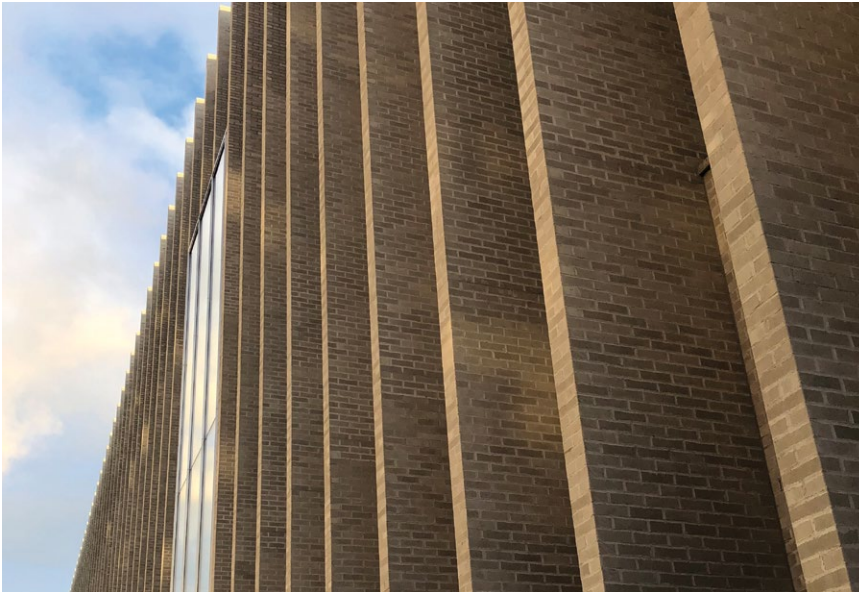


■ Safer application of stack bond panels



# MOSO® Lochband

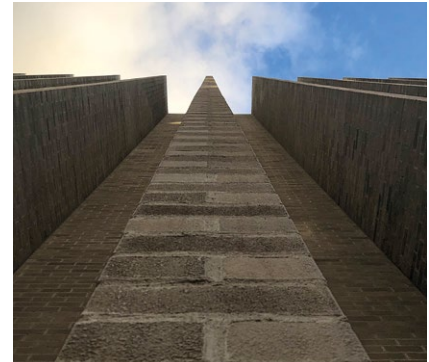
## Reference projects



### Musée cantonale des Baux Arts Lausanne

The "Musée cantonal des Beaux Arts de Lausanne" by the architects Barozzi Veiga emerged from an international competition to redesign the art district.

MODERSOHN manufactured and supplied various masonry support angle brackets, prefabricated fixings and the MOSO® Lochband as masonry reinforcement for the impressive facade.



### Serliana Tower Zurich

In the style of the New York skyscrapers of the 1930s, a 68-metre-high office building, a seven-storey hotel and a commercial building were built in Zurich-Wallisellen.

The building serves, among other things, as a "car hotel" for luxury vehicles for car enthusiasts and as the home of the official Ferrari and Maserati Service Partner, as well as the "Octane 126" racing team.

MODERSOHN manufactured and supplied several products, i.e., prefabricated fastenings, masonry support angle brackets, scaffolding anchors and the MOSO® Lochband as masonry reinforcement.

## Your contact in Germany Spenge

Wilhelm Modersohn GmbH & Co. KG  
(Part of Leviat)

Tel.: +49 5225 8799-0  
Mail: [projekte@modersohn.de](mailto:projekte@modersohn.de)



**Leviat<sup>®</sup>**  
A CRH COMPANY

Innovative engineered products and construction solutions that allow the industry to build safer, stronger and faster.



# Contact Leviat worldwide

## Australia

98 Kurrajong Avenue,  
Mount Druitt, Sydney, NSW 2770  
Tel: +61 - 2 8808 3100  
Email: [info.au@leviat.com](mailto:info.au@leviat.com)

## Austria

Leonard-Bernstein-Str. 10  
Saturn Tower, 1220 Wien  
Tel: +43 - 1 - 259 6770  
Email: [info.at@leviat.com](mailto:info.at@leviat.com)

## Belgium

Industrielaan 2  
1740 Ternat  
Tel: +32 - 2 - 582 29 45  
Email: [info.be@leviat.com](mailto:info.be@leviat.com)

## China

Room 601 Tower D,  
Vantone Centre  
No. A6 Chao Yang Men Wai Street  
Chaoyang District  
Beijing P.R. China 100020  
Tel: +86 - 10 5907 3200  
Email: [info.cn@leviat.com](mailto:info.cn@leviat.com)

## Czech Republic

Pekařská 695/10a  
155 00 Praha 5  
Tel: +420 - 311 - 690 060  
Email: [info.cz@leviat.com](mailto:info.cz@leviat.com)

## Finland

Vädursgatan 5  
412 50 Göteborg / Sweden  
Tel: +358 (0)10 6338781  
Email: [info.fi@leviat.com](mailto:info.fi@leviat.com)

## France

6, Rue de Cabanis  
31240 L'Union  
Tel: +33 (0)5 34 25 54 82  
Email: [info.fr@leviat.com](mailto:info.fr@leviat.com)

## Germany

Liebigstrasse 14  
40764 Langenfeld  
Tel: +49 - 2173 - 970 - 0  
Email: [info.de@leviat.com](mailto:info.de@leviat.com)

## India

Unit S4, 902, A Wing,  
Lodha iThink Techno Campus Building,  
Panchpakhadi, Pokharan Road 2,  
Thane, 400606  
Tel: +91-022 695 33700  
Email: [info.in@leviat.com](mailto:info.in@leviat.com)

## Italy

Via F.lli Bronzetti 28  
24124 Bergamo  
Tel: +39 - 035 - 0760711  
Email: [info.it@leviat.com](mailto:info.it@leviat.com)

## Malaysia

28 Jalan Anggerik Mokara 31/59  
Kota Kemuning,  
40460 Shah Alam Selangor  
Tel: +603 - 5122 4182  
Email: [info.my@leviat.com](mailto:info.my@leviat.com)

## Netherlands

Oostermaat 3  
7623 CS Borne  
Tel: +31 - 74 - 267 14 49  
Email: [info.nl@leviat.com](mailto:info.nl@leviat.com)

## New Zealand

2/19 Nuttall Drive, Hillsborough,  
Christchurch 8022  
Tel: +64 - 3 376 5205  
Email: [info.nz@leviat.com](mailto:info.nz@leviat.com)

## Norway

Vestre Svanholmen 5  
4313 Sandnes  
Tel: +47 - 51 82 34 00  
Email: [info.no@leviat.com](mailto:info.no@leviat.com)

## Philippines

27F Office A, Podium West Tower,  
12 ADB Avenue, Ortigas Center  
Mandaluyong City, 1550  
Tel: +63 - 2 7957 6381  
Email: [info.ph@leviat.com](mailto:info.ph@leviat.com)

## Poland

Ul. Obornicka 287  
60-691 Poznań  
Tel: +48 - 61 - 622 14 14  
Email: [info.pl@leviat.com](mailto:info.pl@leviat.com)

## Singapore

10 Benoi Sector,  
Singapore 629845  
Tel: +65 - 6266 6802  
Email: [info.sg@leviat.com](mailto:info.sg@leviat.com)

## Spain

Polígono Industrial Santa Ana  
c/ Ignacio Zuloaga, 20  
28522 Rivas-Vaciamadrid  
Tel: +34 - 91 632 18 40  
Email: [info.es@leviat.com](mailto:info.es@leviat.com)

## Sweden

Vädursgatan 5  
412 50 Göteborg  
Tel: +46 - 31 - 98 58 00  
Email: [info.se@leviat.com](mailto:info.se@leviat.com)

## Switzerland

Grenzstrasse 24  
3250 Lyss  
Tel: +41 (0)800 22 66 00  
Email: [info.ch@leviat.com](mailto:info.ch@leviat.com)

## United Arab Emirates

RA08 TB02, PO Box 17225  
JAFZA, Jebel Ali, Dubai  
Tel: +971 (0)4 883 4346  
Email: [info.ae@leviat.com](mailto:info.ae@leviat.com)

## United Kingdom

President Way,  
President Park,  
Sheffield S4 7UR  
Tel: +44 - 114 275 5224  
Email: [info.uk@leviat.com](mailto:info.uk@leviat.com)

## USA / Canada

6467 S Falkenburg Road  
Riverview, FL 33578  
Tel: (800) 423-9140  
Email: [info.us@leviat.com](mailto:info.us@leviat.com)

For countries not listed

Email: [info@leviat.com](mailto:info@leviat.com)

## Notes regarding this document

© Protected by copyright. The information in this publication is based on state-of-the-art technology at the time of publication. In every case, project working details should be entrusted to appropriately qualified and experienced persons. Leviat shall not accept liability for the accuracy of the information in this document or for any printing errors. We reserve the right to make technical and design changes at any time. With a policy of continuous product development, Leviat reserves the right to modify product design and specification at any time.

# Leviat®